



SKODA | The new Slavia



An Ode to **Unexplored Roads**

Škoda Slavia is a masterpiece derived from Škoda's rich legacy of crafting the world's finest sedans. Beyond the sleek contours and bold design, it carries the essence of exploration and style in every inch. We invite you to begin your exploration journey in utmost comfort and luxury - Let's Drive, Let's Explore.



Exterior Design

Effortlessly blending classic charm with contemporary design language.
Turn heads everywhere you go with the stylish Škoda Slavia.



Front View

Škoda Slavia leaves an indelible mark with its captivating design. The Hexagonal Grille with Chrome Surround and Crystalline LED Headlamps with L-Shaped DRLs ensure it stands out, even on the busiest of streets.



Rear View

Škoda Slavia's rear embodies modern sedan finesse with features like the Crystalline Split LED Tail Lamps, chrome highlights, and a tapered sporty coupé form.

Enhance Your Exploration with Light Design



Škoda Crystalline LED Headlamps with L-Shaped DRLs

The state-of-the-art headlamps are engineered with dependable fog lights to enhance visibility in rough weather. With Škoda Slavia's sleek DRLs amplifying the car's dynamic road presence, exploration remains uninterrupted.

Škoda Crystalline Split LED Tail Lamps

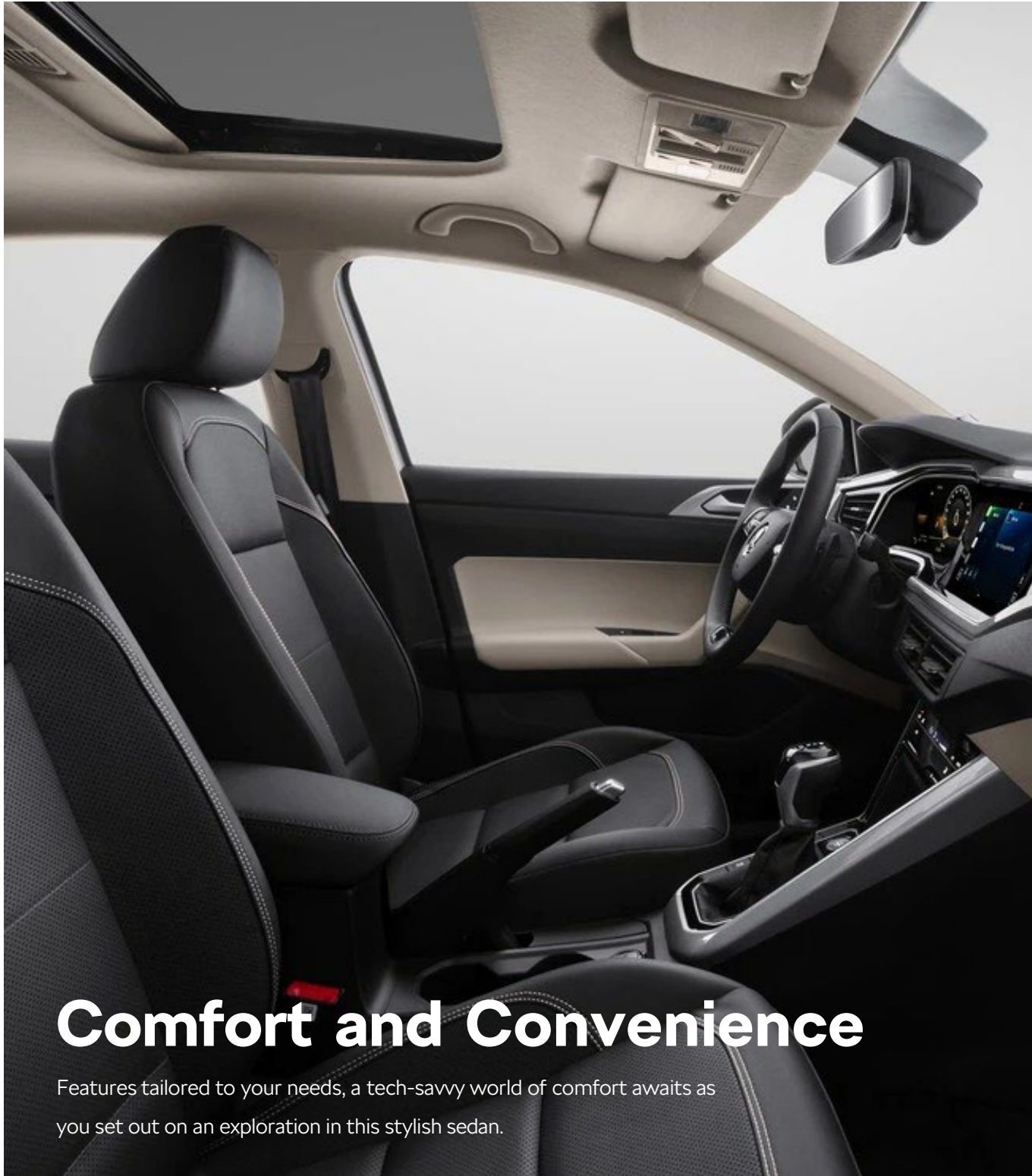
Inspired by Czech heritage, the tail lamps shine with dynamic LED lights, and their sleek, contemporary design positions Škoda Slavia at the pinnacle of style.





Interior Design

Elevate automotive aesthetics with the exquisite Stone Beige & Piano Black Luxe Interiors. Enhanced by a 20.32cm Virtual Cockpit, complemented with chrome accents and ambient lighting, every moment of your journey exudes unmatched style and sophistication.



Comfort and Convenience

Features tailored to your needs, a tech-savvy world of comfort awaits as you set out on an exploration in this stylish sedan.



Electric Sunroof with Anti-pinch Technology

The sunroof opens up for you to enjoy sunlight, fresh air and elevated views.



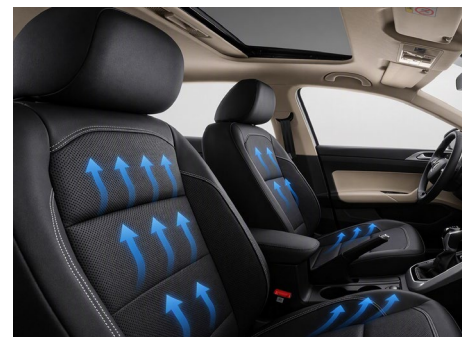
KESSY

The Keyless Entry Start & Stop System enables convenient locking and unlocking of the car.



Climatronic air-conditioning with Air Care

Climatronic automatic air-conditioning with the electronic regulation of the cabin temperature ensures that everyone in the car experiences maximum comfort.



All Weather Comfort

Škoda's commitment to comfort is evident in the ventilated black leatherette seats upfront, featuring a tasteful beige perforated design that guarantees optimal comfort in every weather condition.



Cruise Control

Besides maintaining a preselected speed, cruise control lets you increase or reduce speed without using the pedals.



Electric Seats for Driver & Co-driver

Immerse yourself in ultimate comfort with our electric front seats.



Infotainment, Cockpit, Connectivity

One Touch, Limitless Experiences

Experience a hassle-free journey filled with endless entertainment and integrated features, all at your fingertips.



10" Škoda Infotainment System

10" Infotainment System with wired and wireless Android Auto & Apple CarPlay connectivity.

8" Škoda Virtual Cockpit

The virtual display behind the steering wheel features information like speed, distance travelled, service interval, average fuel consumption, and much more.





1.0 TSI (Turbo Stratified Injection) Engine:

The 1.0 TSI engine, with 85 kW (115 PS) and 178 Nm torque, is powerful yet efficient. It is available in both manual and automatic transmissions.



Automatic Transmission

The Slavia comes equipped with 1.0 TSI 6-speed AT

Performance



High Strength Steel Frames

Škoda Slavia has secured its position as India's safest family sedan with its robust, high-strength steel body that effectively absorbs kinetic energy, by minimizing the impact of any accident. Seamlessly integrated restraint systems like seat belts and airbags provide unbeatable on-the-go safety. Its marvelous design and engineering represent the epitome of safety, as evidenced by its 5-star Global NCAP rating for child and adult safety.

Driver And Passenger Front Airbags

In case of an accident, the driver's airbag in the steering wheel and the passenger's airbag in the dashboard are always ready to protect you & your loved ones.

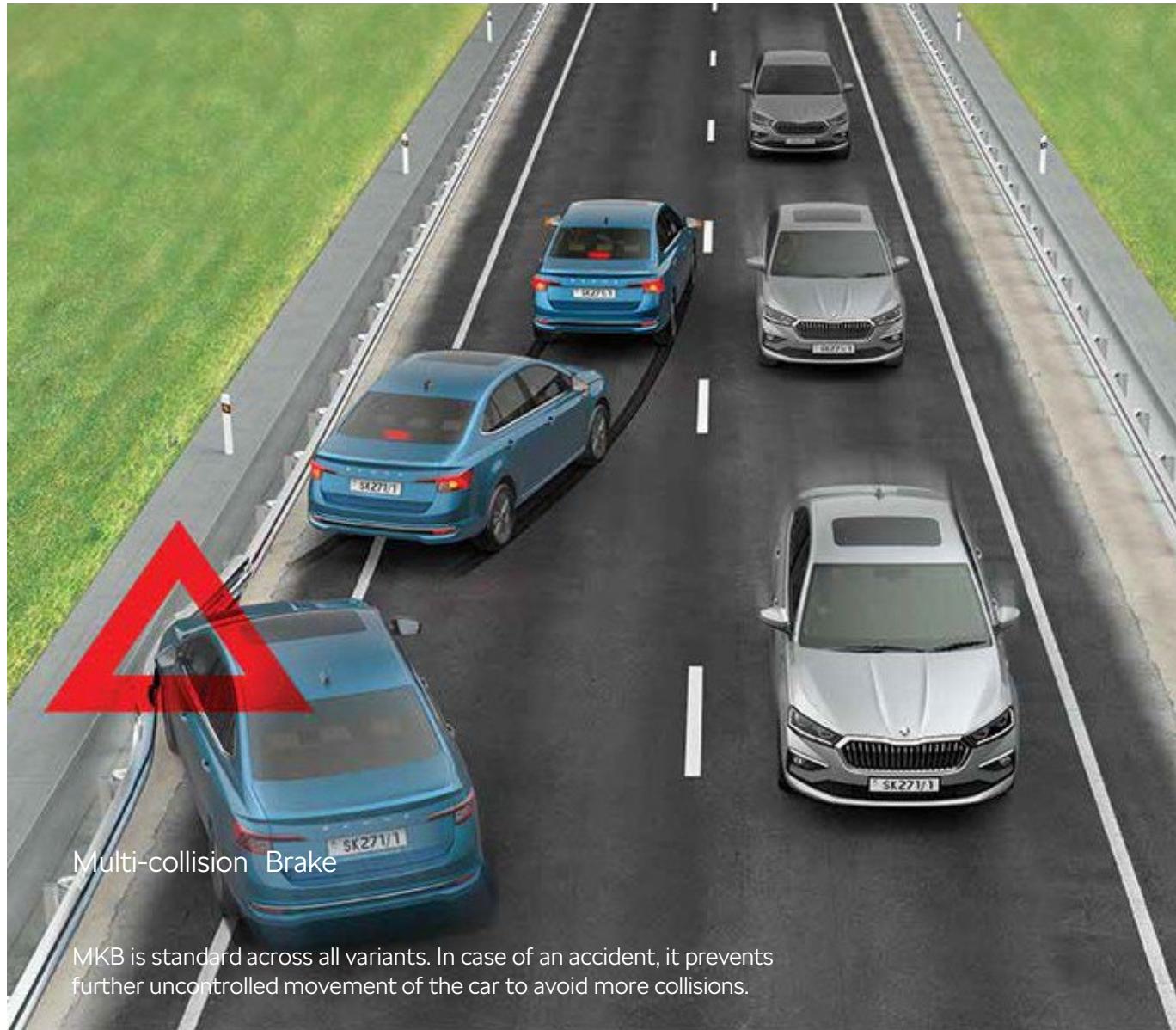
Front Side Airbags

These airbags protect the pelvis and chest of the driver and passengers in case of a side collision.

Curtain Airbags

These airbags shield the driver and passengers against head injury in the event of a side collision.





Multi-collision Brake

MKB is standard across all variants. In case of an accident, it prevents further uncontrolled movement of the car to avoid more collisions.

Anti-lock Braking System

ABS helps maintain control of the vehicle during emergency braking. An ABS intervention is noticeable from the pulsating movements of the brake pedal. This feature is standard across all variants.

Electronic Differential Locking System

Standard EDS ensures stability on diverse road surfaces, while XDS+ helps cornering by braking inner wheels, effective up to 30km/h.

Motor Slip Regulation

MSR ensures control by increasing engine speed if the driven axle wheels lock during sudden speed reductions, thus preventing wheel slip. Standard across all variants.

Park Distance Control

Park in small spaces with ease. This system is standard across all variants and helps you factor in nearby objects to help you park safely.

Anti-theft Alarm

This function, which is standard across all variants, detects vibrations to identify invalid access to the vehicle and immediately sends you an SMS in case of an attempted breach.

Traction Control System

TCS/ASR, which is standard across all variants, helps stabilize the vehicle when driving on low-grip roads. It reduces the drive power transmitted to the wheels when they spin.

Brake Disc Wiping

The BDW feature enhances safety while driving in the rain by removing excess water from the brake to maintain a short braking distance. This feature is standard across all variants.



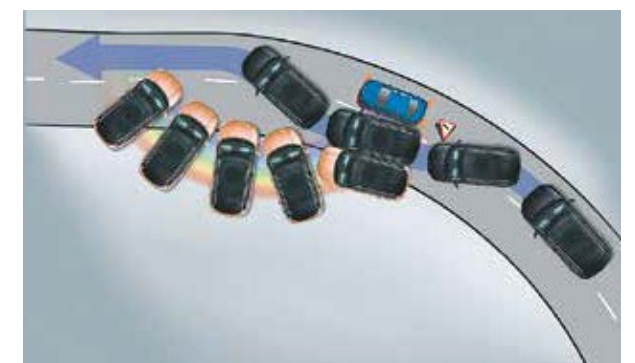
Hill Hold Control

Conquer gradients with HHC that allows a safe start uphill without using the parking brake.



Tyre Pressure Monitoring System

Avoid unnecessary pitstops by keeping tabs on your tyres. This feature, which is standard across all variants, detects and alerts the driver to a drop in pressure in any of the 4 tyres.



Electronic Stability Control

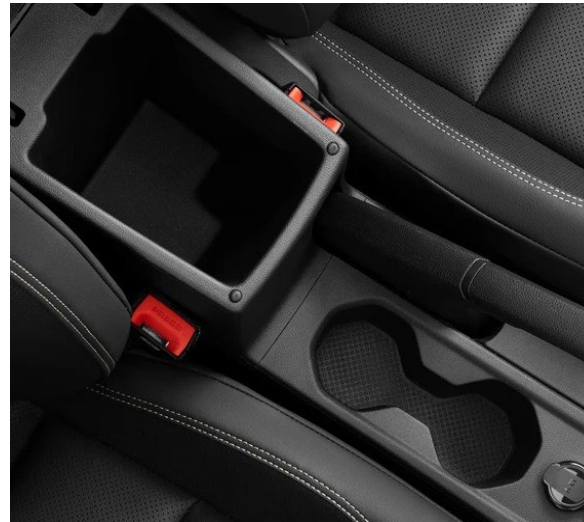
Stay on course even in tricky situations. ESC helps to maintain directional stability and tyre traction during understeer and oversteer. This feature is standard across all variants.



Storage In Front And Rear Doors



Cupholders In The Armrest



Storage In Front Centre Armrest



Cooled Glove Box

Luggage Capacity

Never compromise on boot space. Škoda Slavia sets the standard with best-in-segment storage – 521 liters with rear seats up, and a whopping 1050 liters when folded down.



2-spoke Multi-functional Steering Wheel With Chrome Scrollers

The multi-functional steering wheel offers hassle-free audio control with stylish chrome scrollers and adjustable positioning for driver comfort.



Climatronic Air Conditioning with Aircare Function

Climatronic automatic air conditioning maximizes cabin comfort for everyone.



Kessy

The Keyless Entry Start & Stop System enables convenient locking and unlocking of the car.



12V Power Socket In Front Central Console

The power socket in the front central console helps you power devices on the go.



Cruise Control

In addition to maintaining the preselected speed, cruise control enables you to increase or reduce speed without using pedals.



Adjustable Rear A/C Vents

The adjustable rear A/C vents ensure comfort for the rear passengers in the car.



Wireless Charging

Charge your phone wirelessly while driving (only on selected phones).



Rear View Camera with Static Guidelines

Reverse and park safely with a rear camera.

Colours List



Candy White



Brilliant Silver



Lava Blue



Deep Black



Carbon Steel



Cherry Red

Technical Specifications

Technical Description	1.0 TSI/85 kW
Engine	
Engine type	1.0 TSI Petrol , in-line, 4 Stroke Positive Ignition Direct Injection Engine
Clutch	Hydro Dynamic Torque Converter
Cylinders	3
Displacement [cm ³]	999
Max. power/revs [hp @ rpm]	115 / 5000-5500
Max. torque/revs [Nm at rpm]	178 / 1750-4500
Fuel consumption - rule 115 of CMVR [kmpl]	17.8
Transmission	
Wheel drive	Front Wheel Drive
Transmission	6 Speed
Chassis	
Front axle	McPherson suspension with lower triangular links and stabiliser bar
Rear axle	Twist Beam Axle
Braking system	Hydraulic Diagonal Split Vaccum Assisted Braking System
Brake – front	Disc
Brake – rear	Drum
Steering system	Electro-Mechanical Steering (Power Assisted)
Wheels	Steel wheel 6J x 15" (Classic), Alloy wheel 6J x 16" (Signature/Sportline/Prestige/Monte Carlo)
Tyres	195/65 R15-Classic, 205/55 R16-Signature/Sportline/Prestige/Monte Carlo
Outside dimensions	
Length [mm]	4 541
Width [mm]	1 752
Height [mm]	1 507
Wheel base [mm]	2 651
Ground clearance (Laden condition) [mm]	145
Inside dimensions	
Storage capacity [l]	521/1 050
Weights	
Kerb weight [kg]	1 217-1 256
Gross weight [kg]	1 660
Liquids	
Tank capacity [l]	45

Engine & Trim	Essence	Selection
1.0 TSI/85kW (115PS)	6-speed automatic	6-speed automatic
Design		
Wheels		
Alloy wheels R(16), Ving	■	-
Alloy wheels R(16), Ving Black	-	■
Safety		
Illumination		
Škoda Crystalline Halogen Headlamps with LED Day time running lights	■	-
Škoda Crystalline LED Headlamps with 'L' Shaped Day time Running Lights	-	■
LED Reading Lamps - Front & Rear	■	■
Visibility		
Anti-glare outside rear view mirror	■	■
Automatic front wiper system with rain sensor	■	■
Rear Defogger	■	■
Auto dimming interior rear view mirror	■	■
Braking & Stabilizing Systems		
ESC (Electronic Stability control), ABS (Antilock Braking System) & EBD	■	■
MKB (Multi Collision Braking)	■	■
EDS (Electronic Differential Lock System), XDS & XDS+ (Over 30 Km/h)	■	■
TCS (Traction Control System), MSR (Motor Slip Regulation)	■	■
BDW (Brake Disc Wiping)	■	■
HHC (Hill Hold Control)	■	■
Airbags		
Driver & Passenger front airbag	■	■
Curtain Airbags	■	■
Front Side Airbags	■	■
More		
ISOFIX & Top tether points on Rear Seats	■	■
Door open indicator	■	■
Remote Operation		
Central door locking with speed sensor	■	■
KESY (Engine Start/Stop & Locking/ Unlocking of Door)	■	■
Remote control with foldable key	■	■
Central locking and unlocking of doors and boot lid	■	■
Comfort		
Seats		
Rear seats split 60:40 foldable with center armrest	■	■
Manual Height Adjustment for Driver seat	■	-
Electric Driver and Co-Driver Seats	-	■
Front centre armrest with storage	■	■

Equipment	Essence	Selection
Black Fabric and Leatherette seats	■	-
Ventilated Black Leatherette Front seats with perforated design	-	■
Steering Wheel		
2-Spoke Multifunctional Steering wheel with chrome insert & scroller	■	■
Height & Length adjustable steering wheel	■	■
Paddle Shifters	■	■
Infotainment & Connectivity		
10" Škoda Infotainment System	■	■
Wired and Wireless Smartlink - Apple Carplay & Android Auto	■	■
Climate Control		
Climatronic - Auto A/C with control touch panel & Air Care function	■	■
Adjustable dual rear A/C vents	■	■
Sunroof		
Electric Sunroof with Anti-Pinch Technology	■	■
Convenience		
Information Display		
4 dials medium MFA with 3.5" TFT display	■	-
8" Škoda Virtual Cockpit	-	■
Electronic Driving Assistance		
Cruise Control	■	■
Rear view camera - with static guidelines	■	■
Parktronic Sensors at rear	■	■
More		
12V power socket in front centre console	■	■
2 x USB-C Type socket in front (Data & Charging)	■	■
Front sun visors with vanity mirror on co-driver side	■	■
Sharkfin antenna	■	■
Four Foldable roof grab handles	■	■
Storage		
521 litres Boot space	■	■
Storage compartment in the front and rear doors	■	■
Driver Storage compartment	■	■
Bottle holders in the front & Rear doors	■	■
Cup holders - Center Rear Armrest	■	■
Storage compartment in the front centre console & centre armrest	■	■
Cooled Glove Box	■	■
Advanced Features		
Smart Phone Pocket (Driver & Co-Driver)	■	■
SmartClip ticket holder	■	■
Two USB-C socket in rear (Charging)	■	■
Coat hook on rear roof handles	■	■
Reflective Tape on all four Doors	■	■
Smart Grip Mat for one hand bottle operation	■	■

S K O D A